

## NEBRASKA CHILDREN AND FAMILIES FOUNDATION COMMUNITIES FOR KIDS INITIATIVE

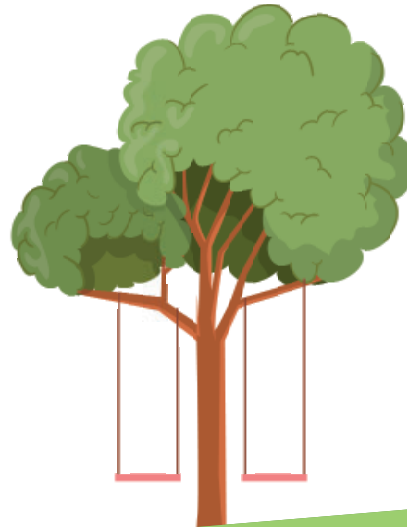
The Communities for Kids initiative was created in response to community requests for assistance with shortages of high-quality early care and education programs — shortages that both impact children’s optimal development and pose a challenge for communities hoping to attract and retain the viable workforces they need to thrive.

Communities for Kids partners with communities’ public and private entities to support and coordinate planning for access to high-quality early care and education for all children birth through age eight. These partnerships are customized to address each community’s unique assets and needs — so each community can grow and prosper well into the future.

Nebraska Children and Families Foundation provides expertise and coordination to support communities using a collective impact approach:

- **ENGAGE** stakeholders in identifying the strengths and gaps of the current whole-child, early care and education resources in their community by completing the Early Childhood Quality and Capacity Survey (ECQCS), if a similar assessment has not already been completed. Engaging schools is an important element of this work.
- **UTILIZE** informed decision-making to determine strategies and desired outcomes most relevant to meeting the priority needs identified in the community assessment and detailing a business plan when indicated. Whenever possible, this will be done through existing planning efforts to maximize community resources.
- **CONNECT** communities with resources, including other communities through peer learning networks regarding research, best practices, implementation, quality measurements, financing, use of government/public resources/ funding, and physical environmental designs, etc.

**For more information, please contact  
Marti Beard at (402) 310-7251 or  
mbeard@nebraskachildren.org.**



## COMMUNITIES FOR KIDS PARTNERS:

### Cohort 1

Columbus  
Gothenburg  
Grand Island  
Lexington  
Norfolk  
Pender  
Red Cloud  
Schuyler  
York County

### Cohort 2

Albion/Boone Co  
Broken Bow/Custer Co  
Garden Co  
McCook/Red Willow Co  
Nebraska City/Otoe Co  
North Platte  
Ogallala/Keith Co

Stuart/Holt Co  
Tecumseh/Johnson Co  
Valentine/Cherry Co  
Wood River

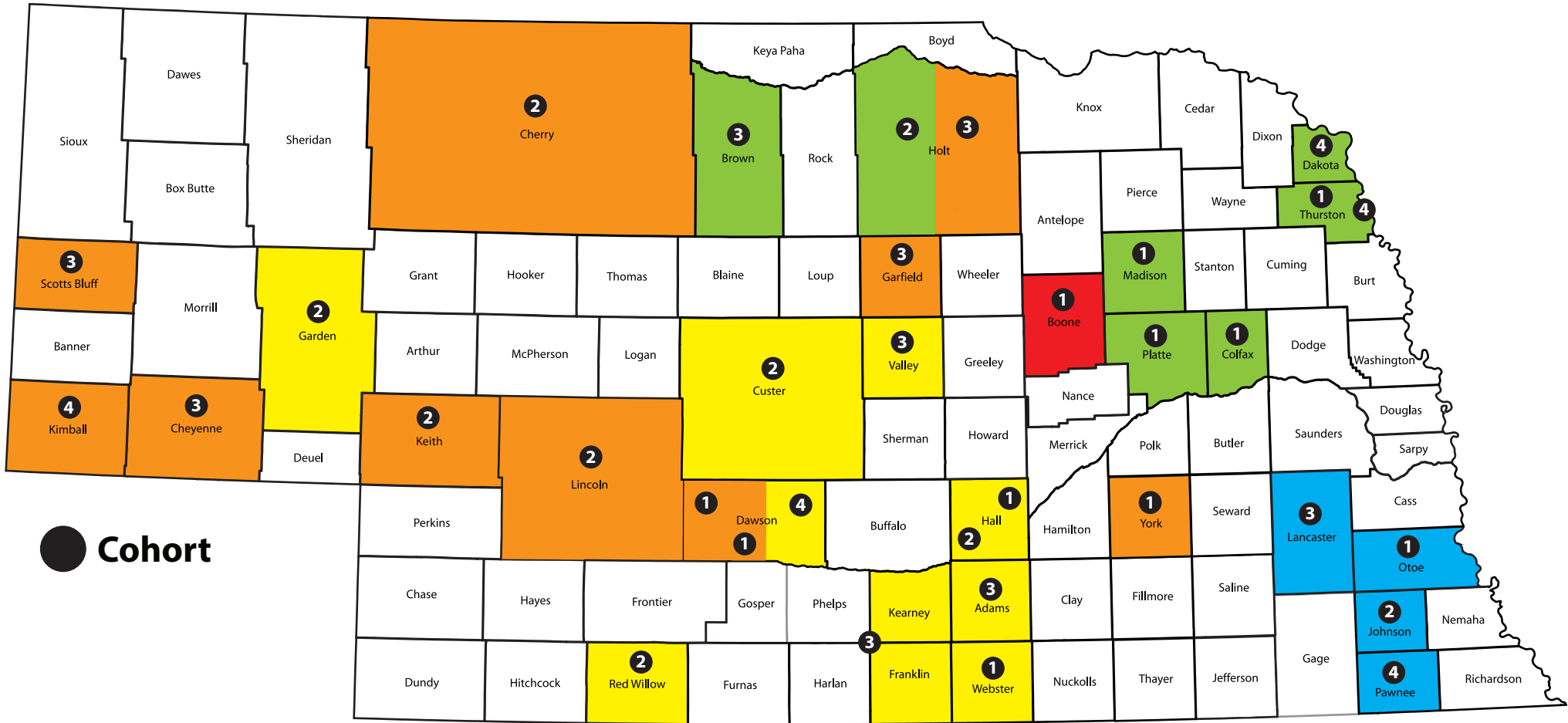
### Cohort 3

Adams Co  
Atkinson/Holt Co  
Burwell/Garfield Co  
Gering  
City of Lincoln  
Ord/Valley Co  
Sidney  
Wilcox-Hildreth

### Cohort 4

Buffalo Co  
Dodge Co  
Douglas Co\*  
\*Zip Codes 68107 & 68111  
Kimball Co  
Overton  
Pawnee Co  
Dakota Co

# Communities for Kids Growth Map



# Communities for Kids Staff



**Marti Beard**  
 mbeard@nebraskachildren.org  
 402.310.7251



**Rachel Sissel**  
 rsissel@nebraskachildren.org  
 308.874.6190



**Lindsay Bartlett**  
 lbartlett@nebraskachildren.org  
 402.413.6927



**Jackie Farrell**  
 jfarrell@nebraskachildren.org  
 402.641.9176



**Shonna Worth**  
 sworth@nebraskachildren.org  
 308.785.8192