

## NEBRASKA CHILDREN AND FAMILIES FOUNDATION COMMUNITIES FOR KIDS INITIATIVE

The Communities for Kids initiative was created in response to community requests for assistance with shortages of high-quality early care and education programs — shortages that both impact children’s optimal development and pose a challenge for communities hoping to attract and retain the viable workforces they need to thrive.

Communities for Kids partners with public and private entities to support and coordinate planning for access to high-quality care and education for all children birth through age five. These partnerships are customized to address each community’s unique assets and needs – so each community can grow and prosper well into the future.

Nebraska Children and Families Foundation provides expertise and coordination, supporting communities using a collective impact approach to:

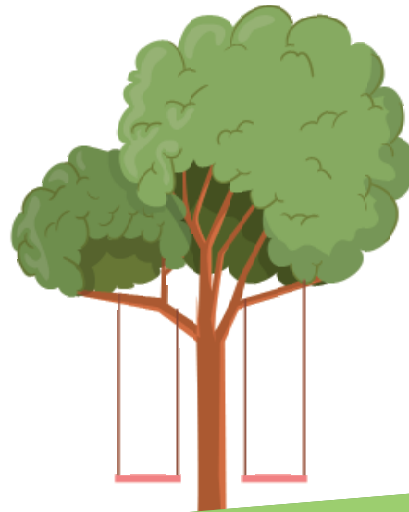
- **ENGAGE** stakeholders in identifying the strengths and gaps of the current early care and education resources in the community by completing a detailed Child Care Landscape Study, including the Early Childhood Quality and Capacity Survey. Engaging providers, families, schools, businesses, economic development and community organizations is an important part of this work.
- **UTILIZE** informed data-driven decision-making to determine strategies and desired outcomes most relevant to meeting the priority needs identified in the community assessment and detailing a business plan when indicated. Key messaging materials, mission, and vision using local data and perspectives are developed.
- **CONNECT** communities with resources, including peer networks, research, best practice, implementing quality measures, financing, use of government/public funding, physical environment designs, etc.

**For more information about Communities for Kids,  
please visit the website at:**

**[www.communitiesforkids.org](http://www.communitiesforkids.org)**

**Or contact us at**

**[C4Kinfo@nebraskachildren.org](mailto:C4Kinfo@nebraskachildren.org)**



## COMMUNITIES FOR KIDS PARTNERS:

### Cohort 1

Columbus  
Gothenburg  
Grand Island  
Lexington  
Norfolk  
Pender  
Red Cloud  
Schuyler  
York County

### Cohort 2

Albion/Boone Co  
Broken Bow/Custer Co  
Nebraska City/Otoe Co  
North Platte  
Ogallala/Keith Co  
Stuart/Holt Co  
Tecumseh/Johnson Co  
Valentine/Cherry Co  
Wood River

### Cohort 3

Adams Co  
Ainsworth/Brown Co  
Atkinson/Holt Co  
Burwell/Garfield Co  
Gering  
City of Lincoln  
Garden Co  
McCook/  
Red Willow Co  
Ord/Valley Co  
Wilcox-Hildreth

### Cohort 4

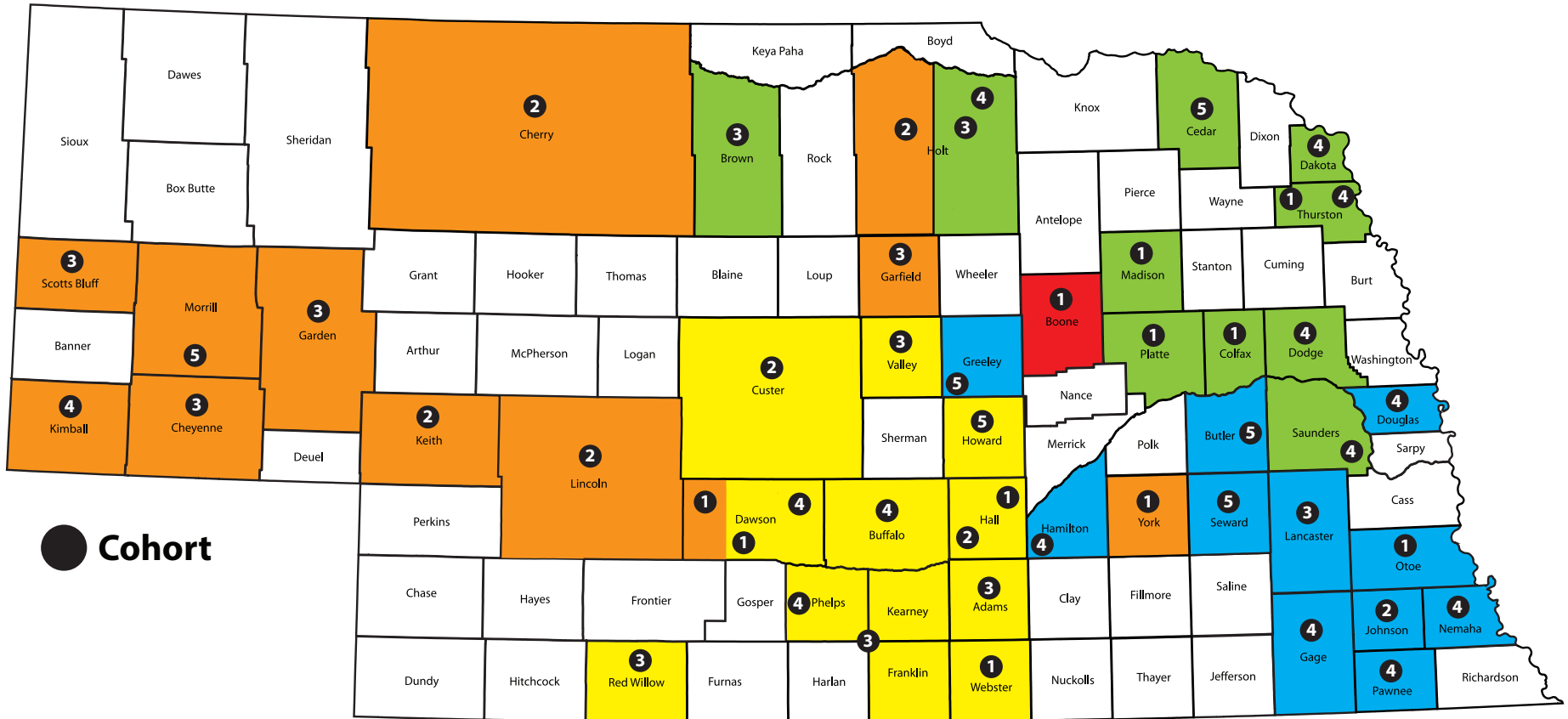
Ashland-  
Greenwood Area  
Bertrand Area  
Buffalo Co  
Cheyenne Co  
Dodge Co  
Douglas Co  
Gage Co  
GCC/Dakota Co

Giltner  
Kimball Co  
Nemaha Co  
O'Neill/Holt Co  
Overton  
Pawnee Co  
Walthill

### Cohort 5

Bayard  
Cedar Co  
East Butler  
St. Paul  
Seward Co  
Spalding

# Communities for Kids Growth Map



**Cohort**

# Communities for Kids Staff



**Marti Beard**  
 mbeard@nebraskachildren.org  
 402.310.7251



**Rachel Sissel**  
 rsissel@nebraskachildren.org  
 308.874.6190



**Lindsay Bartlett**  
 lbartlett@nebraskachildren.org  
 402.413.6927



**Jackie Farrell**  
 jfarrell@nebraskachildren.org  
 402.641.9176



**Shonna Werth**  
 swerth@nebraskachildren.org  
 308.785.8192